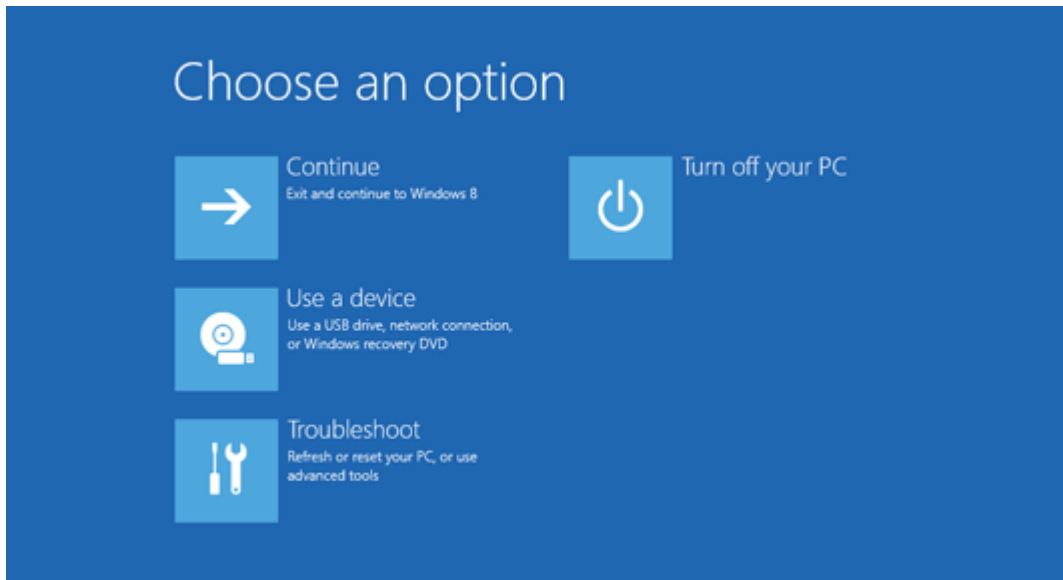
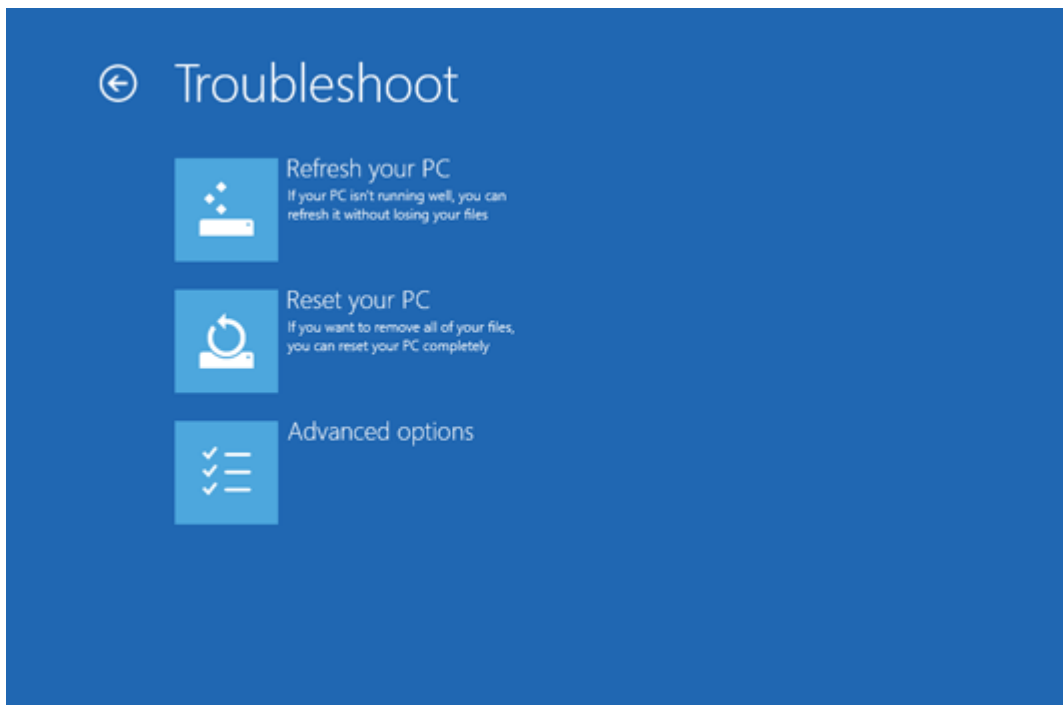


## How to install Ultimate Box drivers in Windows 8, 8.1 and 10.

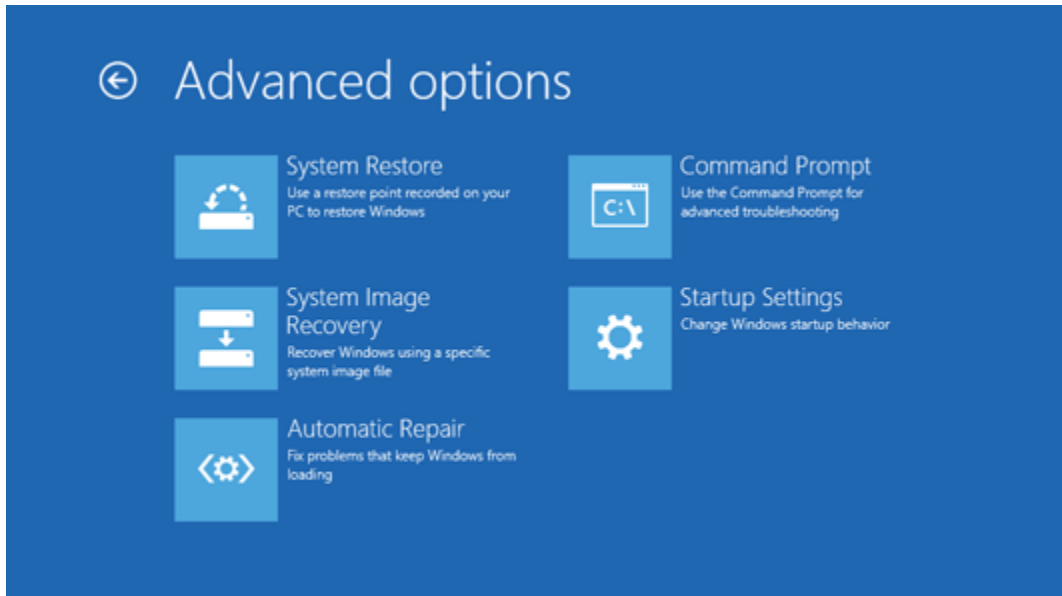
1. Press the Windows key + R to bring up the Run box. Type **shutdown /r /o** and hit Enter.
2. Windows informs you that you are about to be signed off. Click **Close** (go to step 4).
3. OR (instead of first 2 steps), click on **Power**, hold down **Shift** and press **Restart**.
4. Once your Computer has rebooted you will need to choose the **Troubleshoot** option.



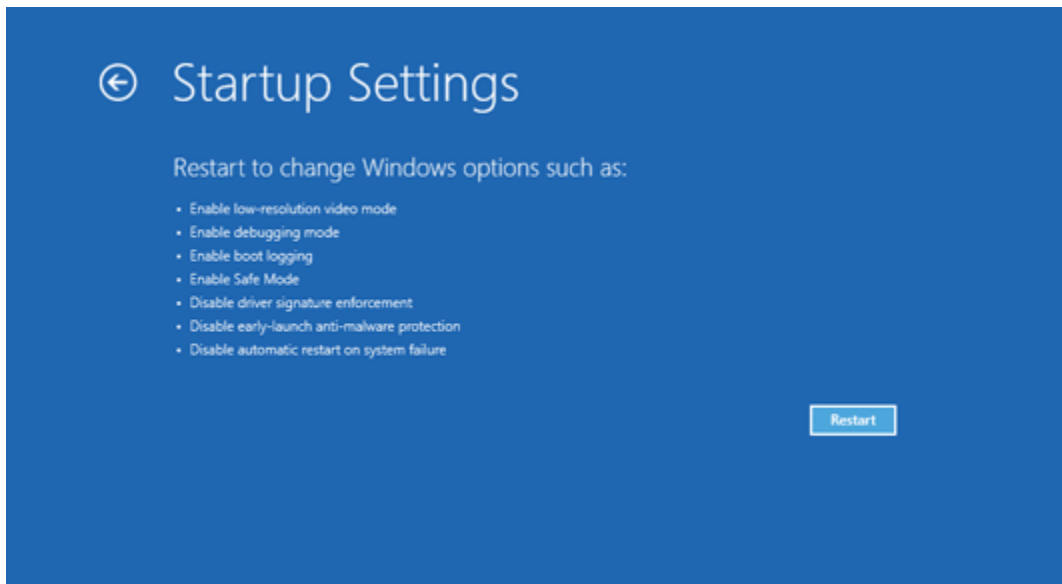
5. Then head into **Advanced options**.



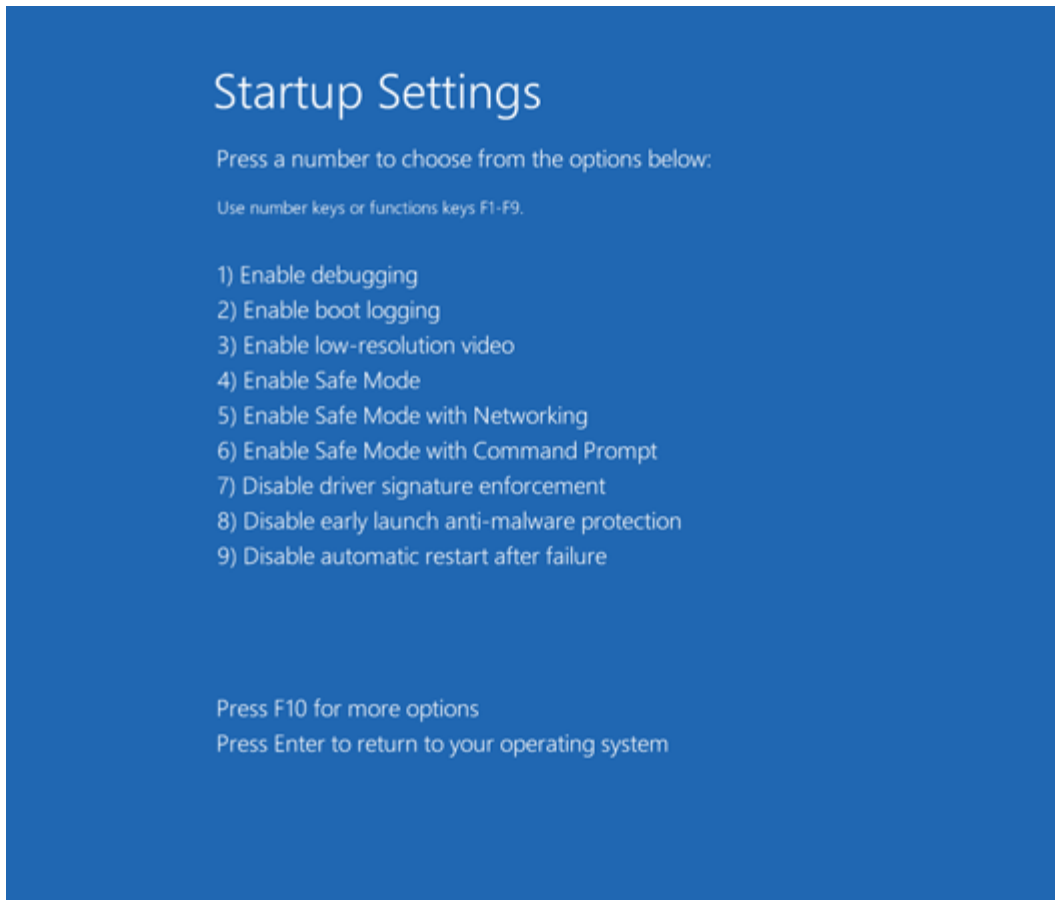
6. In the Advanced Options window, choose **Startup Settings**.



7. Click the **Restart** button on the Startup Settings screen to reboot your computer again.



8. After restart in Startup Settings windows, press the F7 key on your keyboard to select “**Disable driver signature enforcement**”.



9. Your PC will then reboot. Proceed with Ultimate box program installation, Ultimate box Drivers installation or Upgrade. During the installation procedure, Windows will inform you that can't verify the publisher of this driver software. Just ignore the warning message and choose “*Install this driver software anyway*” to complete the installation.  
Keep in mind that after the next restart, Driver Signature Enforcement will be automatically enabled again to prevent new drivers from being installed, Windows will keep using any unsigned drivers you've already installed.